

Role of BIM

in Small & Medium

Enterprises



Small firms have not adopted BIM in their construction projects due to high investment cost and required staff for carrying out BIM projects successfully. BIM is the coming future of the construction industry as many countries have started adopting it and implementing it in their projects due to its vast features such as clashes can be detected at the design stage, coordination among various disciplines and collaboration with each construction stake holders to look out on final designs.

So by implementing BIM in their complex and simple projects can give them accurate and de-tailed model which can make their clients be repetitive and grab more opportunities to grow their business level.

IMPORTANCE OF BIM FOR SMES

01. Clash Detection

Step - 1

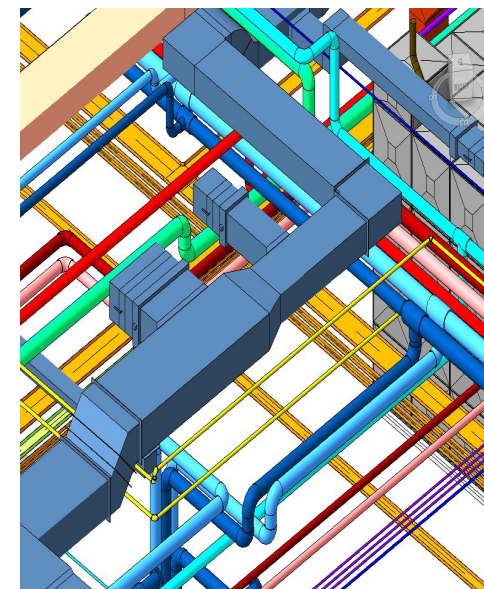
Small firms require BIM experts or need to provide training for BIM implementation in their projects.

Step - 2

BIM boosts collaboration of information with the architects for building components.

Step - 3

In the virtual model, all the clashes can be easily detected and resolved that will not delay the process and save the budger.



02. Accuracy in Design

Step - 1

By using BIM, the designs can be made accurately that can save time and money in the documentation process

Step - 2

Design can be vowltzed through 30 Model that can enhance the sustainable requirement given by the client



03. Grow Business

Step - 1

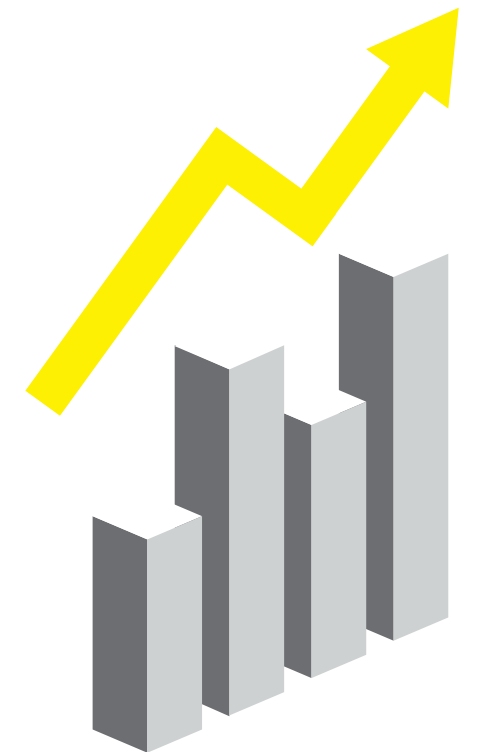
By just highlighting BIM, the other services offered by the small firms will take time to be recognized which will slow down the growth of an overall business.

Step - 2

3D BIM Model helps to generate a high-quality and accurate model for the building elements.

Step - 3

It increases productivity as a modeling in BIM takes less time and gives a precise outcome of the construction projects.



04. Rendered Model

Step - 1

BIM Model can produce high-quality, rendered images of the project model to build collaboration and coordination in a built environment.

Step - 2

BIM Model provides a 3D floor plan to evaluate the design of the interiors of the floor and rendered objects given to representation purpose for the clients.

